

Debrief of Windstorm & Power Outages

Heather Tow-Yick, Superintendent

Dana Bailey, Chief Academic & Success Officer

Martin Turney, Chief of Finance & Operations

Jason Morse, Executive Director of Operations

Tom Mullins, Director of Capital Projects

December 12, 2024

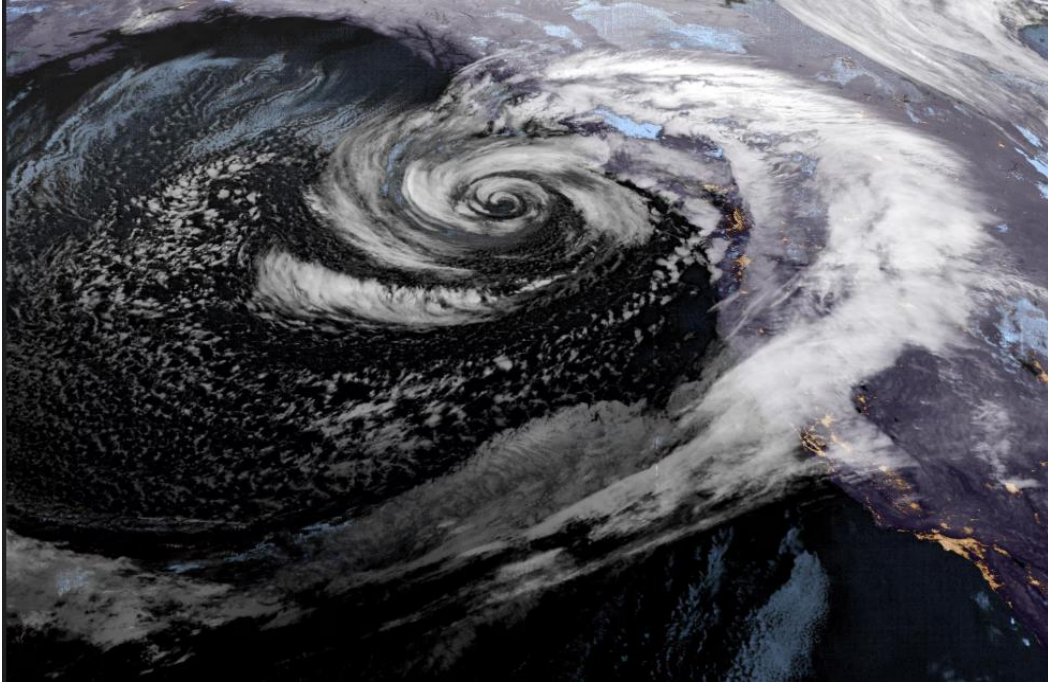


ISSAQUAH
SCHOOL DISTRICT 411

Purpose

- Review the recent windstorm event and response.
- Discuss the progress to address damage, power outages, ongoing repairs and impact to schedules.
- Share next steps.

Overview of Weather Event



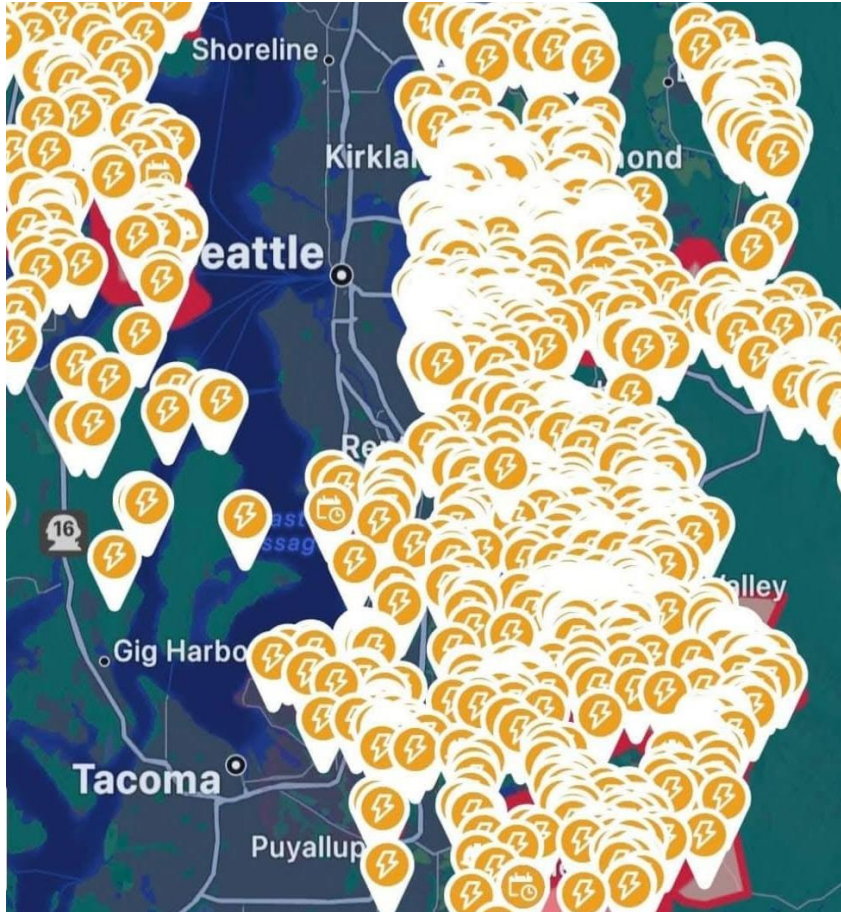
Courtesy of Reuters

This was a storm unlike any other in recorded history at this time of year in the Northwest.

According to the National Weather Service, pressure dropped 27 millibars in six hours, about four times faster than the rate that meteorologists use to label storms as "bomb cyclones." There were nearly 550,000 customers without power in Washington.

In our district and throughout the Eastside, the destruction and damage were worse than expected. Communication was incredibly difficult for our staff, families and community. Driving was not only difficult but dangerous. Trees and storm debris covered the roads, homes, schools. Power lines were down everywhere. Traffic lights were out and our city partners asked us to stay off the roads if possible.

Impacts: Damage, Debris, Outages



Our system and schools sustained significant impacts: network down due to damaged fiber lines, HVAC systems were not working, staff were impacted and could not come to work, some buildings and sites had damage, some buildings entirely inaccessible or difficult to access, and every site had debris.

Our emergency response team was in full operation for 7 days. We stayed in regular communication with one another, with municipal partners, & with PSE. The district provided regular updates to our families, staff and community via all communication channels.

Good News: Partnerships, Community Strength

Throughout the emergency, we were inspired by the strength of our community members, and grateful for our partnership with the cities, county, local first responders and Puget Sound Energy.

Our cabinet team reported that every time they asked a staff member for help with a task, they heard "yes," "we will find a way," or even an answer that exceeded expectations.

WARM BURRITOS & NO-COOK FOOD OPTIONS

THE EQUITY, BELONGING & FAMILY
PARTNERSHIP DEPARTMENT &
STAFF FROM THE CIRCLE

Today, November 22
12:15 p.m. Until Supplies Run Out
Issaquah Senior Center
75 NE Creek Way, Issaquah



THANK YOU, PTSA COUNCIL!



Two partnership examples: Free food thanks to our staff, PTSA Council & anonymous donors; opening CMMS with City to provide charging access.

Holly Street Early Learning Center Campus

- The entire site was significantly impacted by the high winds and tree damage.
- The site incurred structural roof damage to main ELC building and Portable P-2. Both buildings had subsequent water intrusion damage.
- Both buildings were deemed structurally safe to occupy by a licensed structural engineer except for the one office in the main ELC building directly below the main damage.
- Affected areas of both facilities have been dried out and are not currently occupied.
- Repairs are in progress.

Holly Street Early Learning Center



Holly Street Early Learning Center – Main Building



Holly Street Early Learning Campus – Main Building



Holly Street Early Learning Campus – Portable P-2



Issaquah Valley Elementary School

- The entire site was significantly impacted by the high winds and tree damage.
- Damage to the roof was limited to punctures in the roofing membrane and subsequent water intrusion caused damage to two classrooms.
- Affected areas have been dried out, one classroom is back in use and the other is not occupied.
- Repairs have already begun and are expected to be complete sometime the week of 12/9/24.

Issaquah Valley Elementary School



Issaquah Valley Elementary School



Other Damage

- Substantial tree loss at several sites across the district.
- Areas of perimeter fencing at several sites.
- Creekside Elementary School loading dock gates.



Power Outages

- All district sites lost power.
- Most sites came back online between Saturday and late Sunday evening.
- Although several sites had generator back-up, the systems are only enough to power emergency functions.

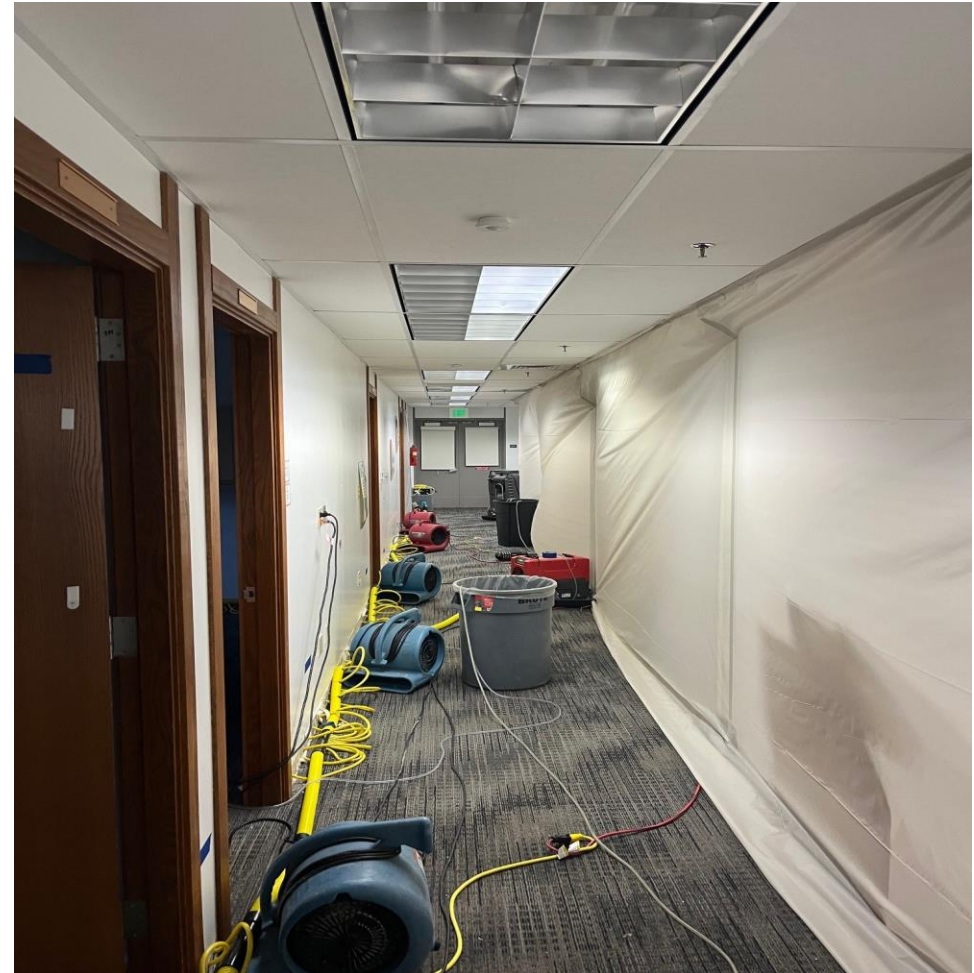


Internet, Network and Phone Outages

- Resulted in significant communication complications across the district.
- Critical network infrastructure was supported by generator power during the outage.
- Emergency radio system allowed for emergency communication to be maintained despite phone (including cell phones) and internet outages.
- Significant impact to our aging HVAC systems.
 - Difficulty coming back online.
 - Challenges with HVAC programming.

Cleanup and Repairs

- Building repairs at Holly St. ELC and Issaquah Valley Elementary are underway.
- Working with the Risk Pool to document and repair damage / loss.
- Cleanup will be ongoing.



Next Steps

- Continued cleanup and repairs to damaged buildings.
- After-action review of the event to address successes, challenges, and possible changes to response plans.
- Provide ongoing input to agencies related to costs of windstorm.
- Prepare for making up school days.

Questions